



BENCHMARK
COMMERCIAL REAL ESTATE



FOR LEASE

\$18.00/SF/YR Lower Level
\$36.00/SF/YR Ground Level
\$28.00/SF/YR Upper Level
Full Service!

Jason Bollhoefer

Jason@CREBenchmark.com

303.395.0116

Simeon Beam

Simeon@CREBenchmark.com

325.665.1325

1635 Blake Street
Denver, CO 80202

1635



OBERMEIER-SHEYKHET
ARCHITECTURE

Overly
Consulting

Property Features



Unit Size*

1 - 2,500 RSF
2 - 1,635 RSF
Garden: 1,000 - 1,500 RSF



Year Built 1939



Parking 3 Spaces



Rate

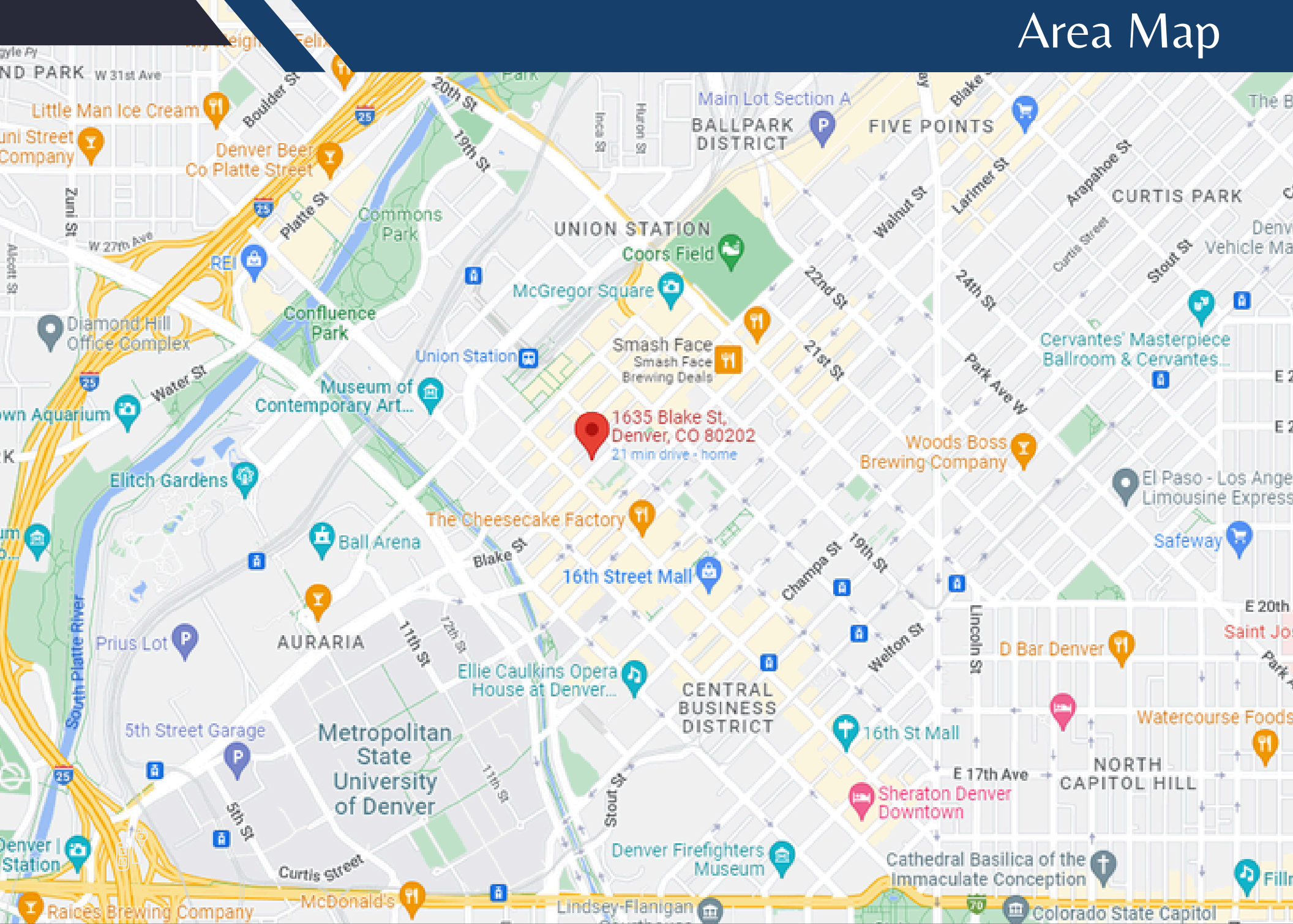
\$18/ SF Lower Level
\$36/ SF Street Level
\$28/ SF Upper Level
FULL SERVICE!



- Great location in LoDo
- Classic loft style architecture
- Building and ample parking nearby. Up to 2 parking spots to rent at market rate
- 1,000 - 2,500 RSF Suites available
- Exposed brick with high ceilings
- Open plan with great natural light
- Inviting office space with open kitchenette
- Massive Exterior Signage Available@ Additional Rate.

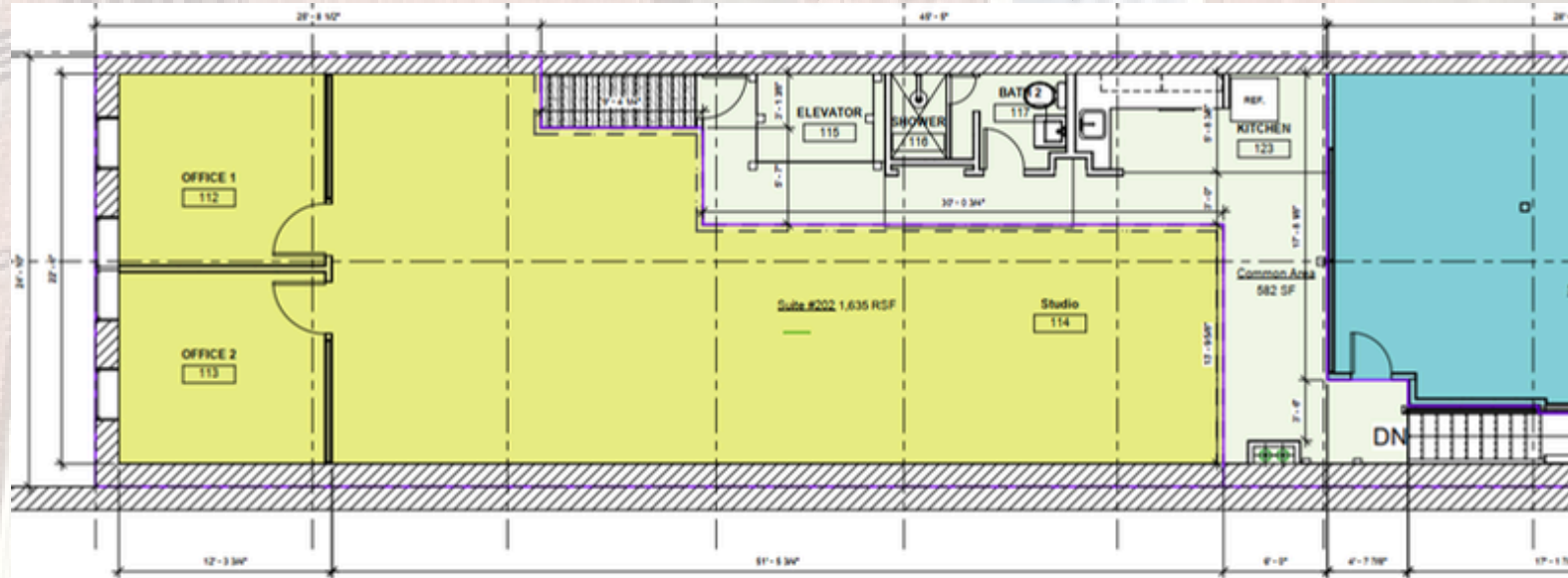
1635 Blake Street Denver, CO 80202

Area Map

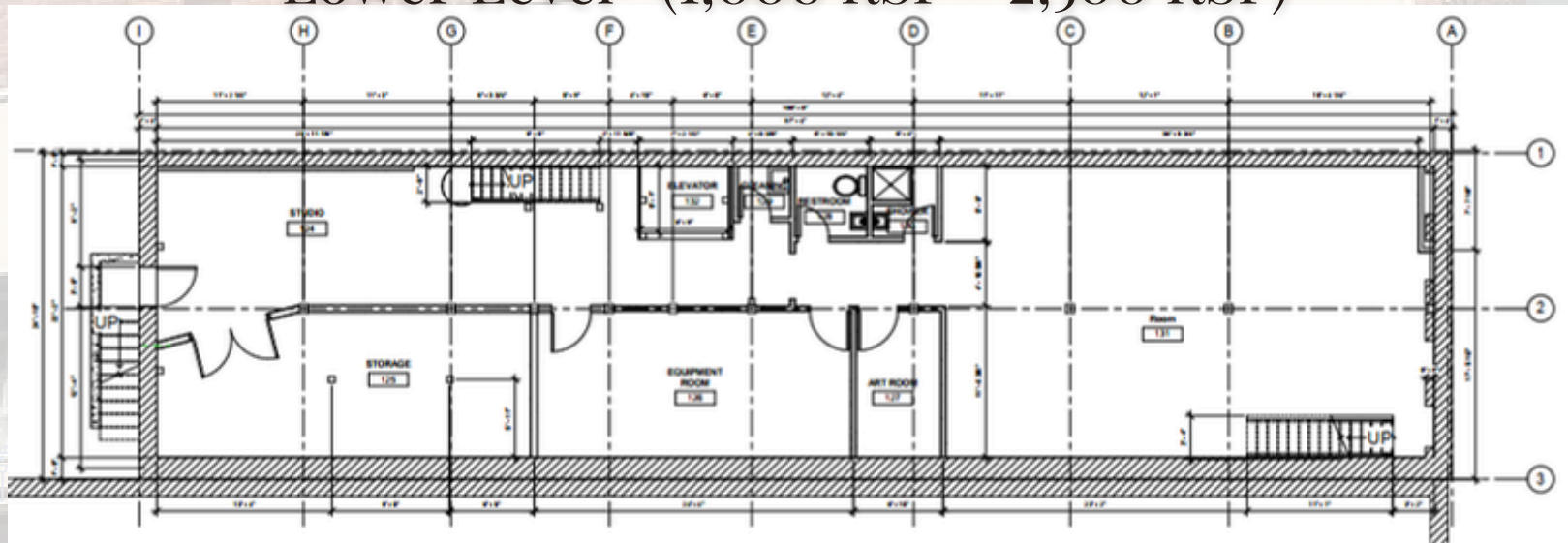


1635 Blake Street Denver, CO 80202

2nd Level (1,635 RSF)



Lower Level- (1,000 RSF - 2,500 RSF)



Property Photos



Jason Bollhoefner
Jason@CREBenchmark.com
303.395.0116

Simeon Beam
Simeon@CREBenchmark.com
720-246-1706

