

PLUG & PLAY SUBLEASE OPPORTUNITY

# 310 Interlocken Parkway, Suite 220

BROOMFIELD, CO 80021



## Contact



**Kari Hartman**  
602.618.3494  
[khartman@keyser.com](mailto:khartman@keyser.com)



**Bart Boranian Allen**  
303.395.0113  
[bart@crebenchmark.com](mailto:bart@crebenchmark.com)



**KEYSER**  
commercial real estate advocates



**BENCHMARK**  
COMMERCIAL REAL ESTATE

**EXIS**



# Prime Office Space – Available Immediately

## LEASE DETAILS



**Size:**  
17,007 SF



**Asking Rate:**  
\$7.00 PSF NNN

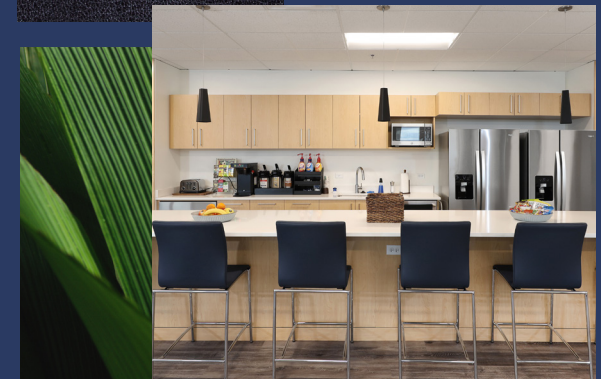


**Master Lease  
Expiration:**  
August 31, 2026



**Availability:**  
Immediate

Looking for a fully furnished, move-in-ready office space in the heart of Broomfield? This 17,007 SF state-of-the-art suite offers a modern, high-performance workspace designed to support collaboration, productivity, and employee well-being.





# Exceptional Features & Amenities

Fully Furnished with Modern Ergonomic Solutions



Sit/Stand Desks



8x8 Workstations

Premium Employee Amenities



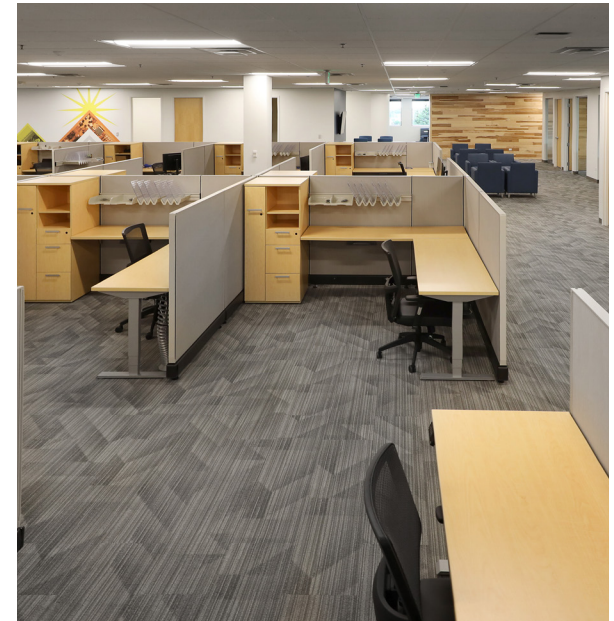
Mother's Room



Spacious Breakroom & Kitchen



Multiple Collaboration Areas



# Floor Plan

Flexible Office Layout:

 14 Private Offices

 1 Small Huddle Room

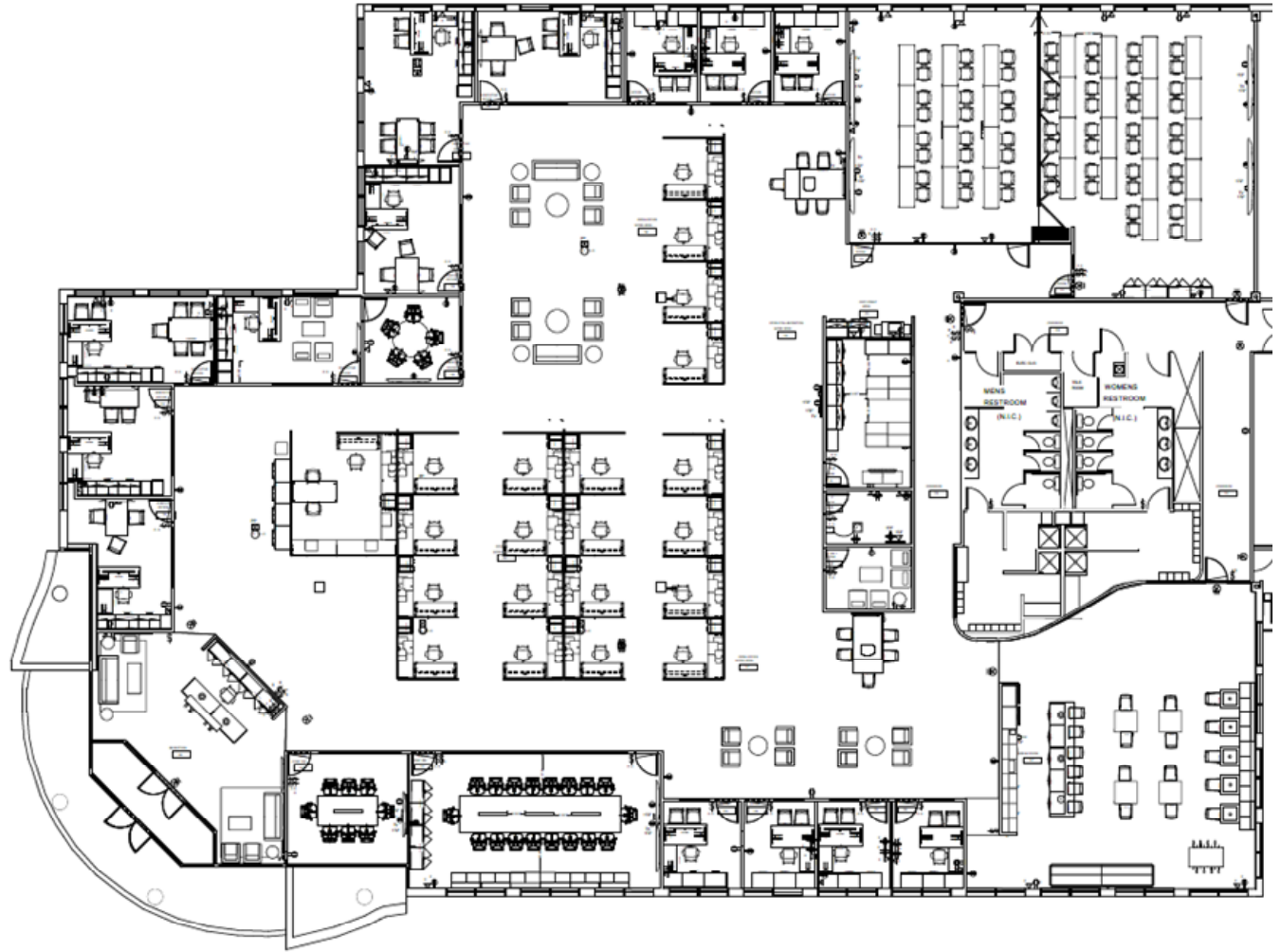
 2 Training Rooms

 2 Conference Rooms

 Open Bullpen with  
20 Workstations

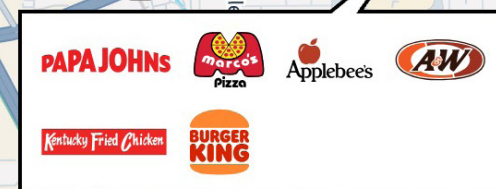
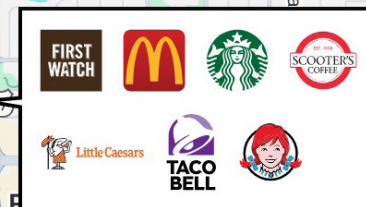
 Reception Area

 IT/Storage Room





# Near by Amenities



## Thank You

Keyser | Commercial Real Estate Advocates | Keyser.com

## Contact



**Kari Hartman**  
602.618.3494  
khartman@keyser.com



**Bart Boranian Allen**  
303.395.0113  
bart@crebenchmark.com

© 2025 Keyser, LLC. All rights reserved. Keyser, LLC has not independently verified the information contained in this document, and makes no guarantee, warranty, or representation, expressed or implied, about the accuracy or completeness of the information. It is your responsibility to independently confirm the accuracy and completeness of the information, and to conduct your own due diligence. You further acknowledge and agree that Keyser LLC is not acting as your fiduciary or agent and owes no duty to you, and it shall not be liable for your use of the information or any errors or omissions. Any projections, opinions, assumptions, or estimates used are for example only and are not intended to guarantee or represent the current or future performance of the property. The value of this transaction to you depends on tax and other factors which should be evaluated by your tax, financial, and legal advisors. You and your advisors should conduct a careful, independent investigation of the property to determine to your satisfaction the suitability of the property for your needs. Photos herein are the property of their respective owners and use of these images without the express written consent of the owner is prohibited.