



BENCHMARK
COMMERCIAL
REAL ESTATE

Tenant & Buyer Solutions



FOR LEASE

\$20/SF Lower Level

\$27/SF Upper Level

Full Service

Jason Bollhoefer

Jason@CREBenchmark.com

303.395.0116

Tisha Brady

Tish@CREBenchmark.com

303-395-0114

1635 Blake Street
Denver, CO 80202

1635



OBERMEIER-SHEYKHET
ARCHITECTURE

Overlay
Consulting

Property Features



Unit Size* 2,500 SF



Year Built 1939



Parking 3 Spaces



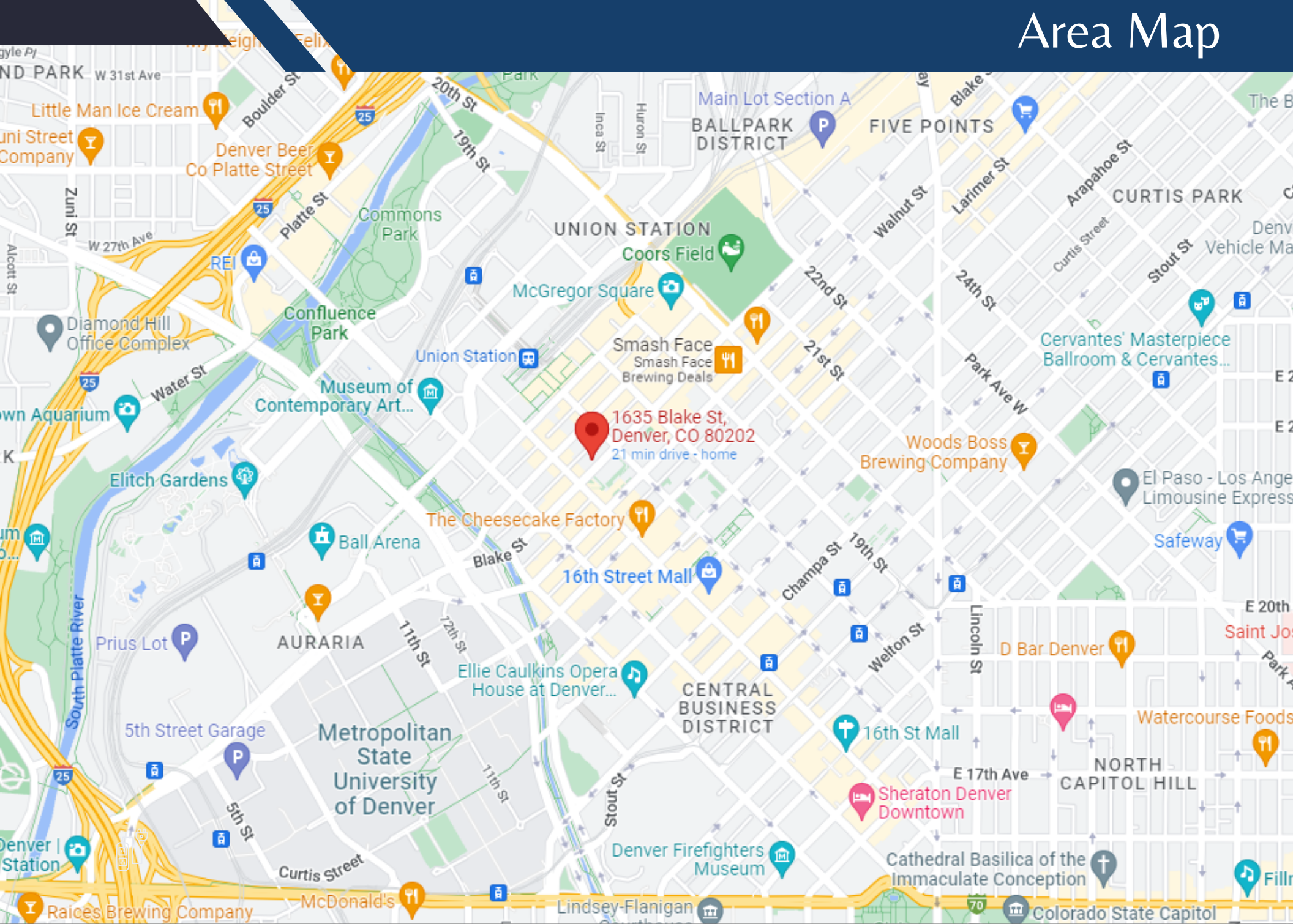
Rate
\$20/ SF Lower Level
\$27/ SF Upper Level
FULL SERVICE



- Great location in LoDo
- Classic loft style architecture
- Building and ample parking nearby. Up to 3 parking spots to rent at market rate
- 2,500 SF
- Exposed brick with high ceilings
- Open plan with great natural light
- Inviting office space with open kitchenette
- Massive Exterior Signage Available @ Additional Rate.

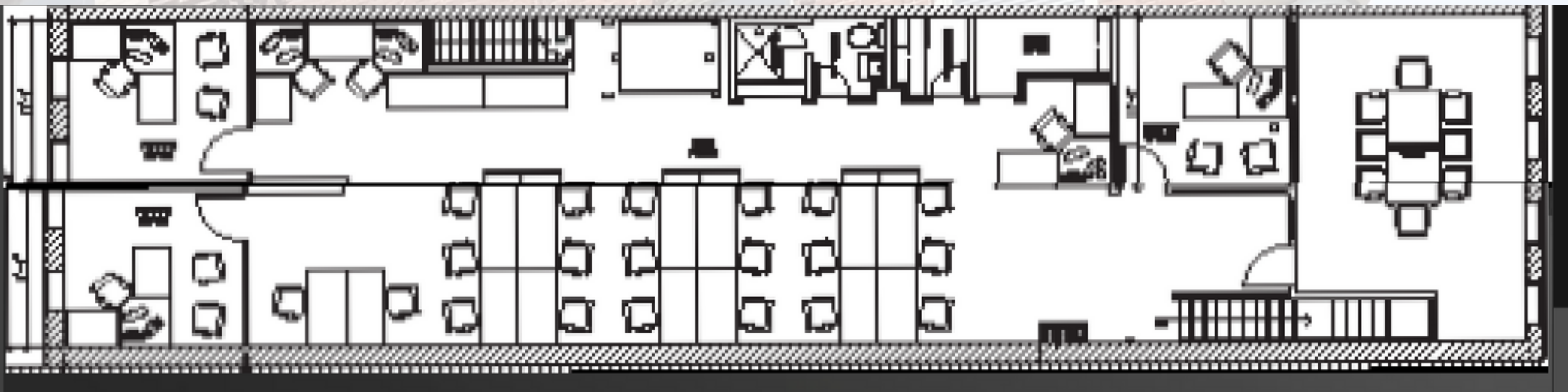
1635 Blake Street Denver, CO 80202

Area Map

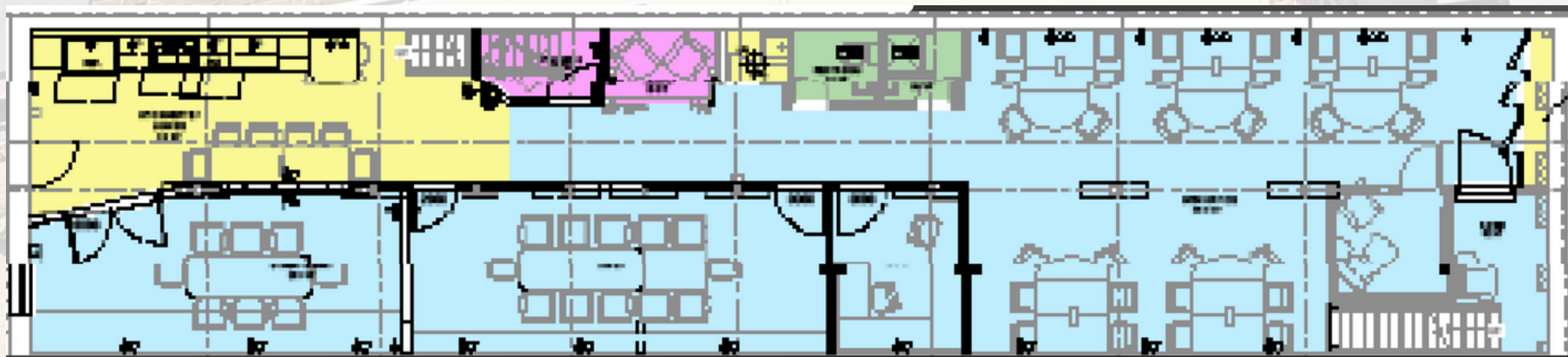


1635 Blake Street Denver, CO 80202

2nd Level (2,500SF)



Lower Level- Hypothetical (1,000SF-2,500SF)



Property Photos



Jason Bollhoefner
Jason@CREBenchmark.com
303.395.0116

Tisha Brady
Tish@CREBenchmark.com
303-395-0114



**BENCHMARK
COMMERCIAL
REAL ESTATE**
Tenant & Buyer Solutions

 **exis**
global tenant representation